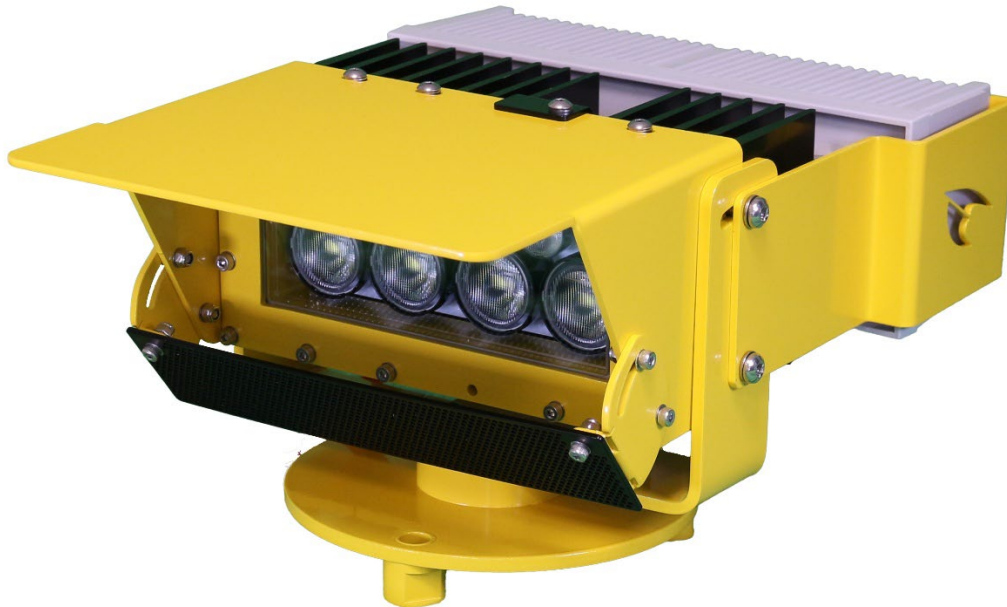


# FloodMax

*LED Floodlight for LED for Helipad*

TLOF FATO Perimeter

ICAO FAA CASA DGAC-STAC



## SUMMARY

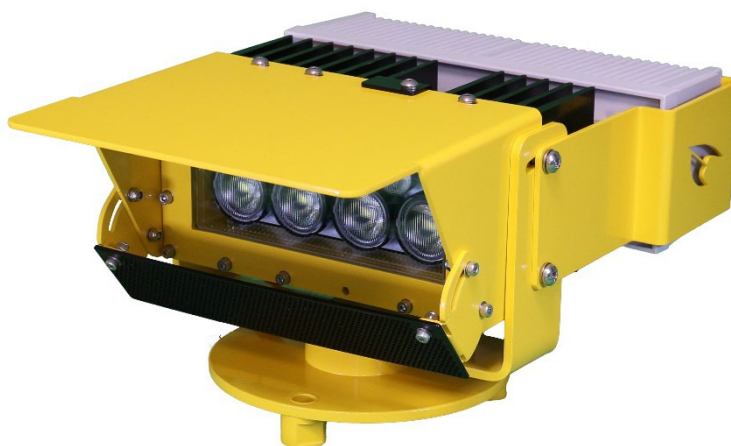
### Product summary:

The **FloodMax** is a cutting-edge lighting solution designed to meet the specific needs of modern heliports and large-scale helipads. With unmatched power, a specially engineered asymmetric beam, and advanced features, FloodMax ensures optimal surface visibility and safety for pilots in all conditions.

Equipped with high-performance LEDs, the FloodMax delivers precise, focused illumination over expansive platforms, making it ideal for accommodating larger helicopters and complex landing operations. Its innovative **stainless steel light deflector** reduces glare near the lamp, ensuring a comfortable and distraction-free environment for pilots.

Safety in case of impact is also guaranteed by the "**Aerolighting Breakable Coupling**," which complies with current standards concerning frangibility, providing added assurance in critical situations.

The FloodMax is also **dimnable from 5% to 100%**, offering precise control over lighting intensity to adapt to specific operational needs and environmental conditions.



Proudly **manufactured in the Aerolighting workshops in Switzerland**, FloodMax reflects a commitment to exceptional quality and precision. Robustly built with durability and efficiency in mind, FloodMax represents the perfect blend of performance, reliability, and adaptability. Whether for commercial, offshore, or emergency helipads, the FloodMax sets a new standard for helipad flood lighting.

<b>Design:</b>	Floodlight for Helipad
<b>Material:</b>	Aluminum or Stainless Steel
<b>IP Rating:</b>	IP 66
<b>Breakable coupling:</b>	Yes
<b>Projection:</b>	< 185 mm
<b>DALI</b>	Yes

<b>Power supply</b>	110~240VAC 48 VDC 6.6A with external driver
<b>Power:</b>	Max. 65W
<b>Brightness ctrl.:</b>	with LBR II DA or DALI
<b>LED Lifetime:</b>	> 80'000 hours
<b>iControl Ready:</b>	Yes



## TECHNICAL DESCRIPTION:

### Mechanical characteristics:

<i>Body material:</i>	Powder coated aluminum and stainless steel Borosilicate glass
<i>Diameter:</i>	Base plate 165mm
<i>Height above ground:</i>	Lower than <185 mm
<i>Weight:</i>	5.5 kg
<i>Temperature range:</i>	-35° to +50°C
<i>Protection Class:</i>	IP66

### Optical characteristics: (visible)

<i>Technology:</i>	High Power LED
<i>Light source:</i>	Aerolighting FloodMax LED engine
<i>Available color:</i>	White
<i>Beam characteristics:</i>	High power asymmetric beam
<i>Intensity level:</i>	100% - 30% - 10% with LBR II DA (optional) from 5% to 100% with DALI (optional)
<i>LEDs Lifespan:</i>	>80'000 hours

### Electrical characteristics:

<i>Supply Voltage:</i>	110~240VDC 50/60hz
<i>Power:</i>	65 Watts
<i>Brightness regulation (visible):</i>	LBR II DA DALI (fully compatible with Digital Addressable Lighting Interface)
<i>Connection:</i>	110~240VDC 50/60hz DALI : L/N/PE/DA/DA
<i>Type of cable:</i>	110~240VDC 50/60hz DALI : 5x0.75mm <sup>2</sup>

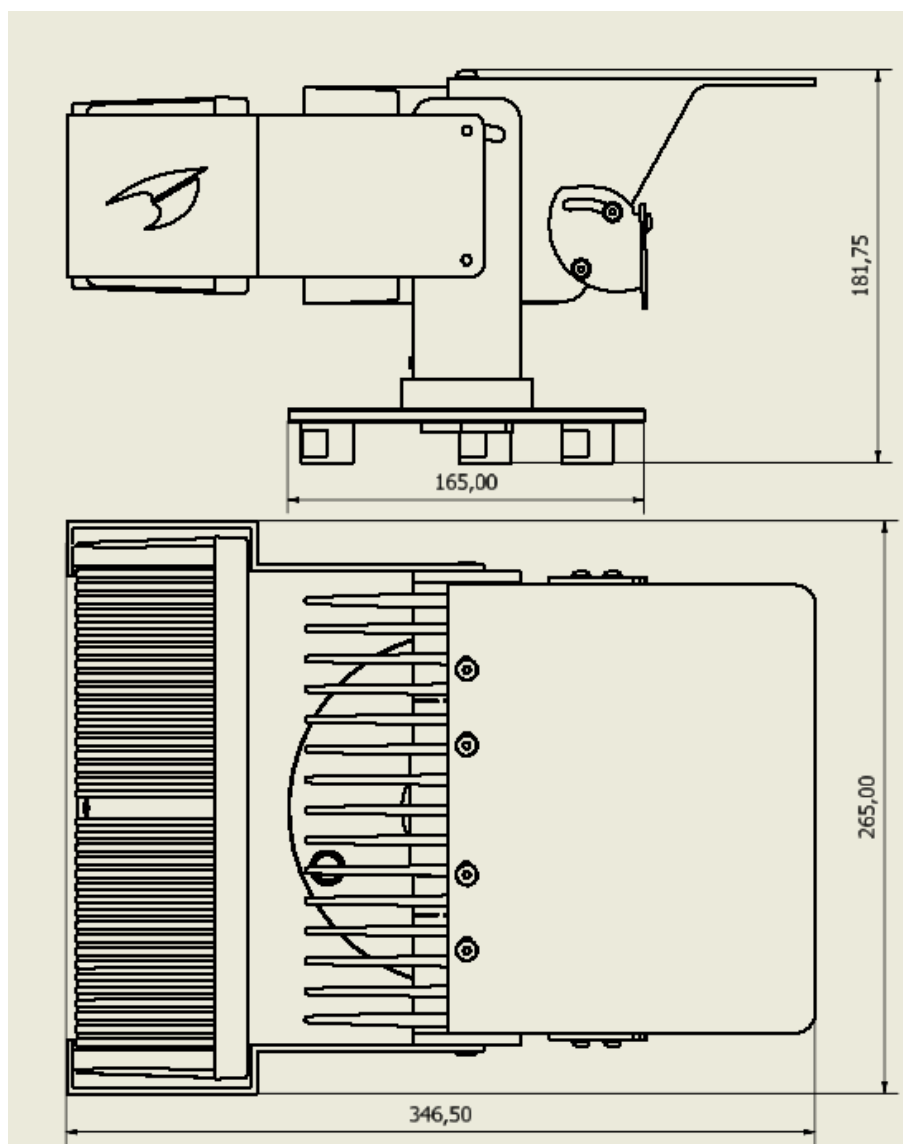


*Equipped with a light adjustable deflector designed to eliminate the "black hole effect" by reducing high-intensity lighting near the source, ensuring uniform illumination across the surface.*

## ORDERING CODE

FloodMax

## DRAWING



The descriptions, photometric measurements and features contained in this publication are given for information only and do not constitute an engagement for our society, which reserves the right to change them without prior notification.