

HeLow Series

Inset LED light for Helipad

TLOF FATO Aiming point Flight path alignment Perimeter Taxiway edges

ICAO FAA CAP CASA DGAC-STAC



SUMMARY

Product summary:

The HeLow is a low profil elevated LED light that comply with the 50mm rules of the ICAO Annex Vol II (2022). This light is ideal for a plateform instalation.

The HeLow simply fixes directly to the ground. There's no need to install a flush-mounting base. It can also be easily mounted on an aluminum deck. The HeLow can also greatly simplify upgrading your existing installation. The cable exit is on one side. A lower cable output is available as an option. It also include a InfraRed light source for pilot flying with NVG. The HeLow series is the result of over 20 years of Aerolighting experience in the design and manufacture of aviation lighting. Its waterproofness, mechanical resistance, the care given to the photometry, the simplicity of the installation, the possibilities of digital control/monitoring make it the ideal product in most situations.

Special care has also been taken with the infrared part: the diffusion angles of the IR are identical to the visible light (ICAO). This guarantees the pilot using NVGs a safe vision in all circumstances.

This lamp is made of aluminum (optional stainless steel), the glass is made of high-quality Schott borosilicate, all screws and bolts are stainless steel. This product does not contain acrylic glass, PMMA, or glues. The LEDs, electronic components and all other components have been selected for their quality from leading manufacturers.

The mechanical resistance allows a charge of more than 10'000 kgs directly on the glass. The waterproofness of the light is based on the principles that have made the reputation of Aerolighting lights: no infiltration of moisture or water in all circumstance and for many years and without maintenance.



| | |
|----------------------|-----------------------------|
| Design: | Inset LED Light for Helipad |
| Material: | Aluminum or Stainless Steel |
| IP Rating: | IP 68 |
| NVG Enhanced: | Integrated InfraRed |
| Projection: | < 50 mm |
| DALI | Yes |

| | |
|--------------------------|---|
| Power supply | 48 VDC 6.6A or 230V with external driver |
| Power: | Max. 15W |
| Standards: | ICAO, FAA, CAP, CASA, EASA, STAC |
| Brightness ctrl.: | with LBR II DA or DALI |
| LED Lifetime: | > 80'000 hours |
| iControl Ready: | Yes |

Standards summary:

| Type | Color | InfraRed integrated | ICAO Annex 14 2020 TLOF | ICAO Annex 14 2020 FATO | ICAO Annex 14 2020 Alignment and guidance | ICAO Annex 14 2020 Aiming | ICAO Annex 14 2020 Taxiway edge | FAA AC 150/5390-2C 2012 | FAA EB87 | FAA EB98 | CAA CAP437 2021 | CASA CAAP 92-2 2014 | EASA CS-HPT-DSN 2019 | ICAO DOC 9261 & 9154 | DGAC-STAC (France) Homologation pending | DIN EN IEC 62471:2009 |
|----------|--------|---------------------|-------------------------|-------------------------|---|---------------------------|---------------------------------|-------------------------|----------|----------|-----------------|---------------------|----------------------|----------------------|---|-----------------------|
| HeLow-G | Green | ✓ | ✓ | | | | | ✓ | ✓ | ✓ | ✓ | ✓ | ✓ | ✓ | pending | ✓ |
| HeLow -W | White | ✓ | | ✓ | ✓ | ✓ | | | | ✓ | | ✓ | ✓ | ✓ | Pending | ✓ |
| HeLow -B | Blue | ✓ | | | | | ✓ | | | ✓ | | | ✓ | ✓ | pending | ✓ |
| HeLow -R | Red | ✓ | | | | | | | | ✓ | | | | ✓ | | ✓ |
| HeLow -Y | Yellow | ✓ | (✓) | | | | | | | ✓ | | | | | | ✓ |

TECHNICAL DESCRIPTION:

Mechanical characteristics:

| | |
|-------------------------------------|--|
| <i>Body material:</i> | Aluminum anodized or Stainless steel Borosilicate glass |
| <i>Diameter:</i> | Light: 125mm – Fixing plate: 170mm |
| <i>Height above ground:</i> | 47mm |
| <i>Weight:</i> | 1.5 kg |
| <i>Temperature range:</i> | -35° to +50°C |
| <i>Protection Class:</i> | IP68 |
| <i>Water / Humidity: Insulation</i> | WatBar – Physical insulation between the “connection room” and the light |
| <i>Note:</i> | No glued parts, no PMMA, no acrylic glass parts |

Optical characteristics: (visible)

| | |
|---------------------------|--|
| <i>Technology:</i> | High Power LED |
| <i>Light source:</i> | Aerolighting HELI-8 LED engine |
| <i>Available color:</i> | Green/White/Yellow/Blue/Red/Infrared/Dual |
| <i>Intensity (White):</i> | 100cd @ 0° (ground level) |
| <i>Horizontal output:</i> | 360° |
| <i>Intensity level:</i> | 100% - 30% - 10% with LBR II DA from 5% to 100% with DALI |
| <i>LEDs Lifespan:</i> | >80'000 hours |

Optical characteristics: (InfraRed)

| | |
|---------------------------|--|
| <i>Technology:</i> | High Power LED |
| <i>Light source:</i> | Aerolighting HELI-8 LED engine |
| <i>Wavelength:</i> | 850nm (central) +/- 30nm |
| <i>Intensity (White):</i> | Up to 180mw/sr @ 0° elevation |
| <i>Horizontal output:</i> | 360° |
| <i>Intensity level:</i> | 100% - 30% - 10% with LBR II DA from 5% to 100% with DALI |
| <i>LEDs Lifespan:</i> | >80'000 hours |

Electrical characteristics:

| | |
|---|---|
| <i>Supply Voltage:</i> | 48 Volts DC Automatic voltage drop (in line) compensation |
| <i>Power:</i> | Max 15 Watts (white: 15W / other color: 9W) |
| <i>Brightness regulation (visible):</i> | LBR II DA DALI (fully compatible with Digital Addressable Lighting Interface) |
| <i>Connection:</i> | +Vdc / -Vdc / DA / DA |
| <i>Type of cable:</i> | 4x 1.5mm2 (if DALI or LBR II DA is not used, only 2 wires are connected) Note: this light can be used only by connecting 48V without any regulation (only ON/OFF) |

Aeronautical standards

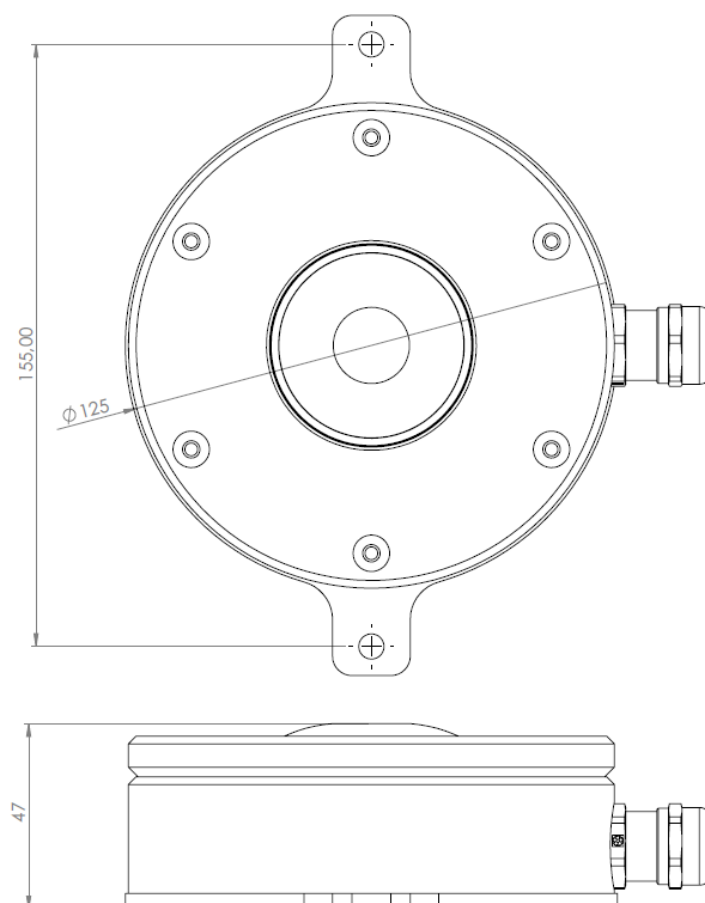
| | |
|---|--|
| ICAO Annex 14 Vol II 5 th edition July 2020 | TLOF perimeter lights Final approach and take off area lights (FATO) Aiming point lights Flight path and guidance lighting system |
| ICAO Annex 14 Vol I 9 th edition July 2022 | Taxiway edge light |
| EASA CS-HPT-DSN Issue 1 2019 | TLOF perimeter lights Final approach and take off area lights (FATO) Aiming point lights Flight path and guidance lighting system |
| CASA CAAP 92-2 (2) February 2014 | Final approach and take off area lights (FATO) Flight path and guidance lighting system |
| FAA Engineering Brief 87 Jan 2012 | Perimeter light L-860HS (L) – Semi-flush heliport fixture LED |
| FAA Engineering Brief 98 Dec 2018 | 850nm Infrared for NVG Exceed L-810(L) up to 120mW/sr from 0°(ground) to 90° // max 250mW/sr |
| FAA AC 150/5390-2C Apr 2012 | TLOF perimeter lights Landing direction lights Flight path alignment lights |
| DGAC-STAC SPE/STAC/SE/E/VIS/6008 | TLOF perimeter lights Final approach and take off area lights (FATO) Flight path and guidance lighting system <i>Homologation pending</i> |
| DGAC-STAC Version 4 | Mechanical resistance on glass (up to 10 tons) – |
| UK CAA CAP 437 July 2021 | Perimeter light (power limitation programed in factories) |
| DIN EN IEC 642471 :2019 | Safety of lamp system (for Infrared part) |
| IEC 60598-1 :2020 | Ingress protection class dust/liquids |

ORDERING CODE

HeLow– G – AL

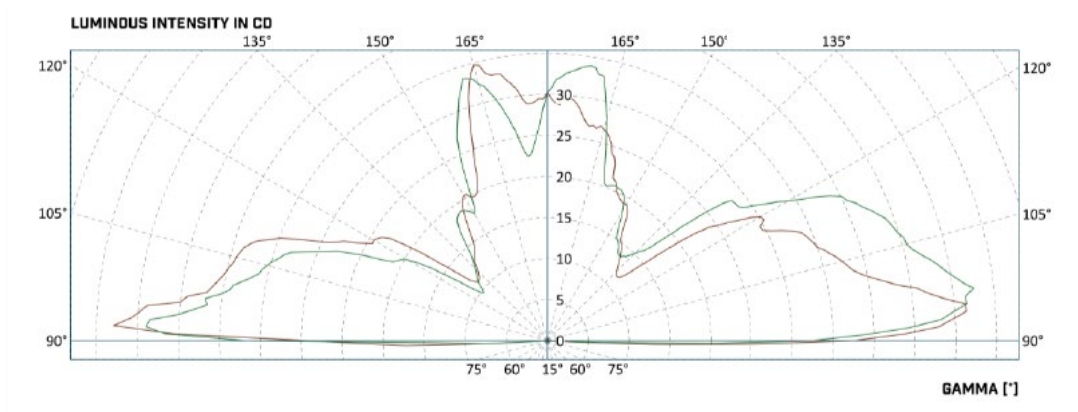
| Type | Color | Material |
|--------------|---|--|
| HeLow | -G: Green -W: White -Y: Yellow -B: Blue -R: Red | -AL: Aluminum -IN: Stainless Steel Stainless steel 1.4404. or 1.4435 |

DRAWING

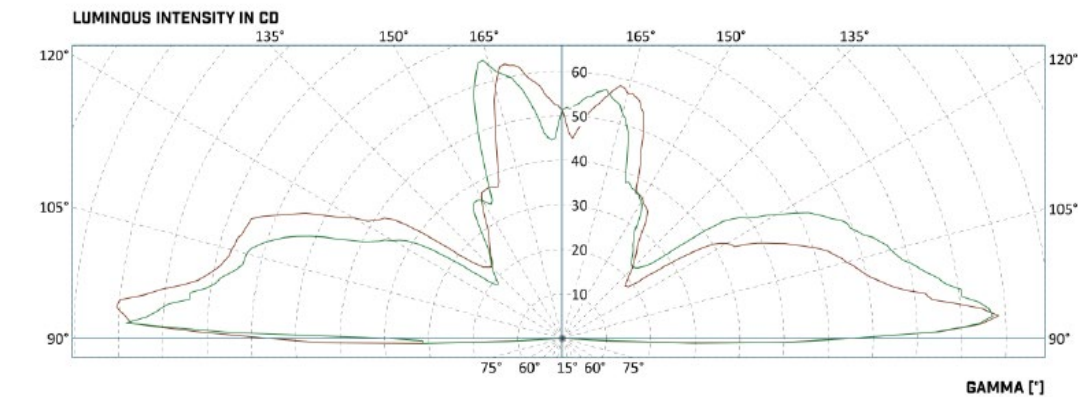


PHOTOMETRIC DATA

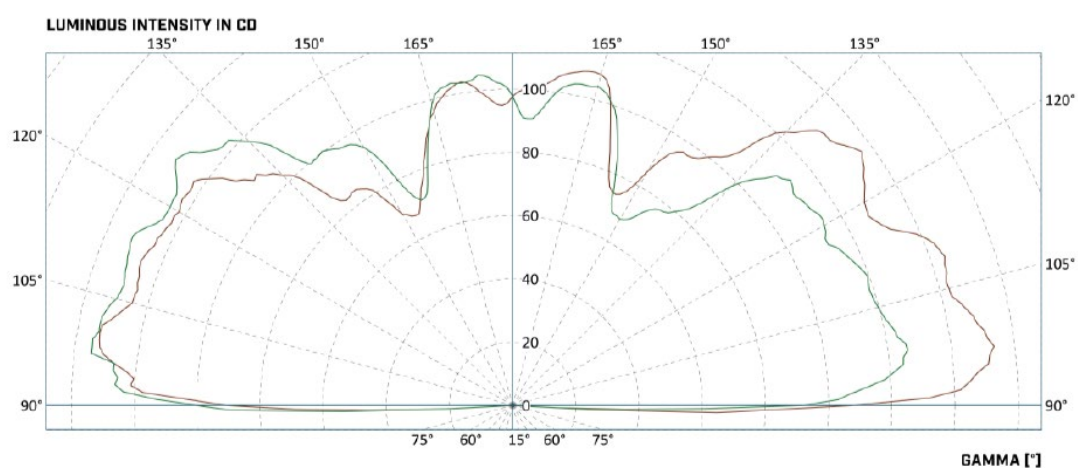
CAP437 (with intensity limitation programed in factory) - Green



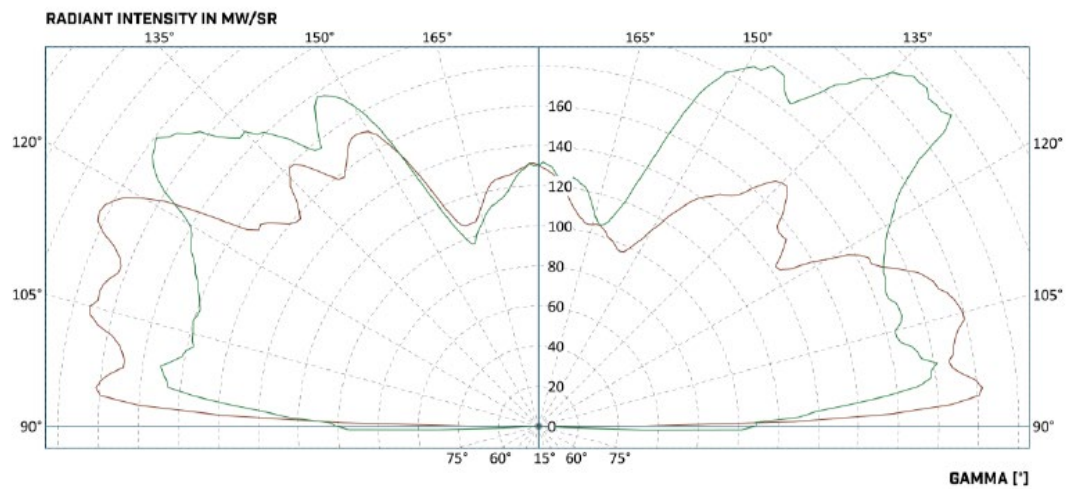
ICAO – Green



ICAO – White



INFRARED (integrated with all colors)



The descriptions, photometric measurements and features contained in this publication are given for information only and do not constitute an engagement for our society, which reserves the right to change them without prior notification.