

Helix-Bi ADP

Bi-directional inset LED light



SUMMARY

Product summary:

This very robust inset Led light is especially designed for special application. Available in a large range of colors. It is easy to install and need no maintenance. The waterproofness is elaborated to guarantee that no water or humidity came into the light. A special physical barrier guarantee that no humidity can come from the connection (WatBar).

The HeliX-Bi power LED from specially selected for their quality, lifespan (< 80'000 hours), and photometrical stability.

This light is available in Bi-directional and Uni-directional.

Design:	Bi-direcitonal inset LED light	Input	26-52VDC
Dimension (on DIN rail):	Diameter: 150mm	Power:	4-12W
Voltage:	48VDC		
Dimming:	(optional DA)		

TECHNICAL DESCRIPTION:

Mechanical characteristics:

Body material:	Aluminum anodized or Stainless steel Borosilicate glass
Diameter:	150mm
Height above ground:	Lower than <4 mm
Weight:	1.2 kg
Temperature range:	-35° to +50°C
Protection Class:	IP68
Water / Humidity: Insulation	WatBar – Physical insulation between the “connection room” and the light
Note:	No glued parts, no PMMA, no acrylic glass parts

Optical characteristics: (visible)

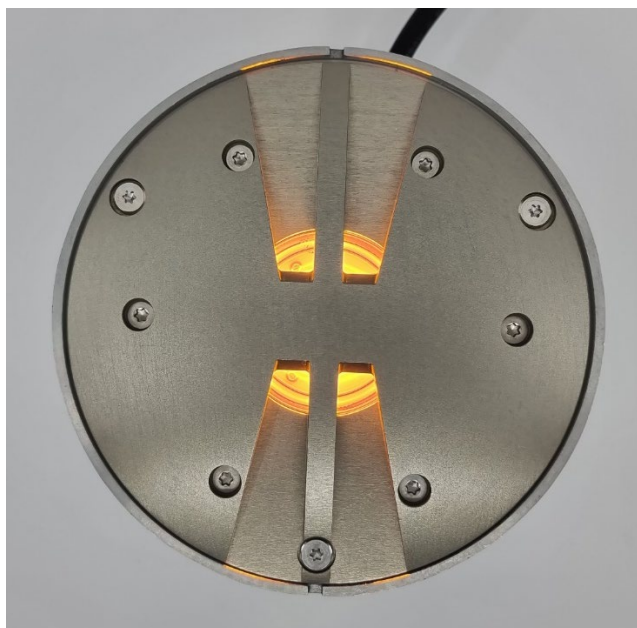
Technology:	High Power LED
Light source:	Aerolighting HELI-8 LED engine
Available color:	Green/White/Yellow/Blue/Red/Infrared/Dual
Intensity (White):	100cd @ 0° (ground level)
Horizontal output:	360°
Intensity level:	100% - 30% - 10% with LBR II DA from 5% to 100% with DALI
LEDs Lifespan:	>80'000 hours

Optical characteristics: (InfraRed)

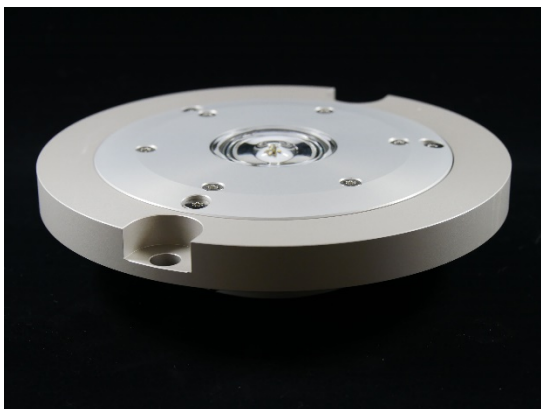
Technology:	High Power LED
Light source:	Aerolighting HELI-8 LED engine
Wavelength:	850nm (central) +/- 30nm
Intensity (White):	Up to 180mw/sr @ 0° elevation
Horizontal output:	360°
Intensity level:	100% - 30% - 10% with LBR II DA from 5% to 100% with DALI
LEDs Lifespan:	>80'000 hours

Electrical characteristics:

Supply Voltage:	48 Volts DC Automatic voltage drop (in line) compensation
Power:	Max 15 Watts (white: 15W / other color: 9W)
Brightness regulation (visible):	LBR II DA DALI (fully compatible with Digital Addressable Lighting Interface)
Connection:	+Vdc / -Vdc / DA / DA
Type of cable:	4x 1.5mm2 (if DALI or LBR II DA is not used, only 2 wires are connected) Note: this light can be used only by connecting 48V without any regulation (only ON/OFF)



RELATED PRODUCTS



8" adapter ring (install HELIX light into standard 8 inches base)



150mm shallow base (HXX Base)

- External IP67 110-230 Volts driver
- External IP67 6.6A Driver
- LBR II DA brilliancy control central power supply

The descriptions, photometric measurements and features contained in this publication are given for information only and do not constitute an engagement for our society, which reserves the right to change them without prior notification.