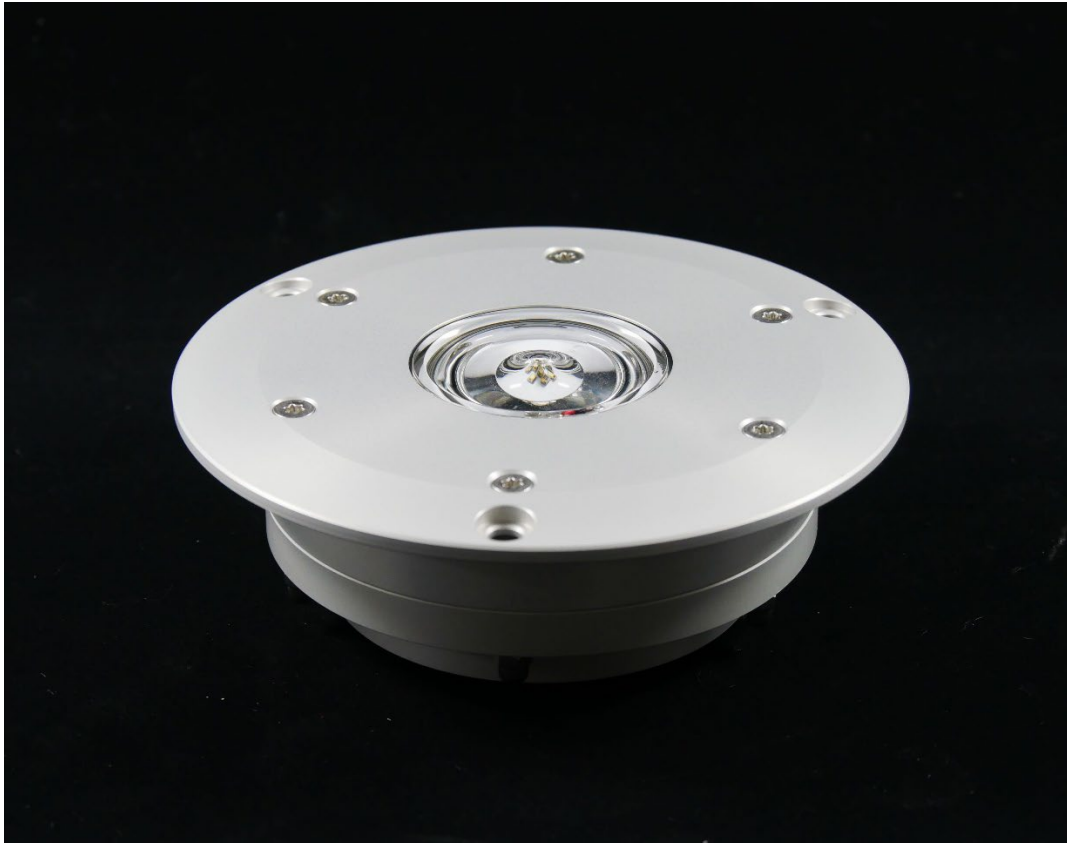


HeliX Series

Inset LED light for Helipad

TLOF FATO Aiming point Flight path alignment Perimeter Taxiway edges

ICAO FAA CAP CASA DGAC-STAC



SUMMARY

Product summary:

Helix is a robust and very low projection inset LED light for Helipad. This product is designed for very high solicitation.. With an increased static and dynamic load capacity, the HeliX reduces the possibility of damage. The HeliX also include a InfraRed light source for pilot flying with NVG. The HeliX inset LED light is the result of over 20 years of Aerolighting experience in the design and manufacture of aviation lighting. Its waterproofness, mechanical resistance, the care given to the photometry, the simplicity of the installation, the possibilities of digital control/monitoring make it the ideal product in most situations.

Special care has also been taken with the infrared part: the diffusion angles of the IR are identical to the visible light (ICAO). This guarantees the pilot using NVGs a safe vision in all circumstances.

This lamp is made of aluminum (optional stainless steel), the glass is made of high-quality Schott borosilicate, all screws and bolts are stainless steel. This product does not contain acrylic glass, PMMA, or glues. The LEDs, electronic components and all other components have been selected for their quality from leading manufacturers.

The mechanical resistance is twice as high as the current standards (more than 10'000 kgs on the glass). The waterproofness of the HeliX is based on the principles that have made the reputation of Aerolighting lights: no infiltration of moisture or water in all circumstance and for many years and without maintenance.



Design:	Inset LED Light for Helipad
Material:	Aluminum or Stainless Steel
IP Rating:	IP 68
NVG Enhanced:	Integrated InfraRed
Projection:	< 4mm
DALI	Yes

Power supply	48 VDC 6.6A or 230V with external driver
Power:	Max. 15W
Standards:	ICAO, FAA, CAP, CASA, EASA, STAC
Brightness ctrl.:	with LBR II DA or DALI
LED Lifetime:	> 80'000 hours
iControl Ready:	Yes

Standards summary:

Type	Color	InfraRed integrated	ICAO Annex 14 2020 TLOF	ICAO Annex 14 2020 FATO	ICAO Annex 14 2020 Alignment and guidance	ICAO Annex 14 2020 Aiming	ICAO Annex 14 2020 Taxiway edge	FAA AC 150/5390-2C 2012	FAA EB87	FAA EB98	CAA CAP437 2021	CASA CAAP 92-2 2014	EASA CS-HPT-DSN 2019	ICAO DOC 9261 & 9154	DGAC-STAC (France)	DIN EN IEC 62471:2009
HeliX-G	Green	✓	✓					✓	✓	✓	✓	✓	✓	✓	✓	✓
HeliX-W	White	✓		✓	✓	✓			✓	✓		✓	✓	✓	✓	✓
HeliX-B	Blue	✓					✓			✓			✓	✓		✓
HeliX-R	Red	✓								✓				✓		✓
HeliX-Y	Yellow	✓	(✓)							✓						✓

TECHNICAL DESCRIPTION:

Mechanical characteristics:

<i>Body material:</i>	Aluminum anodized or Stainless steel Borosilicate glass
<i>Diameter:</i>	150mm
<i>Height above ground:</i>	Lower than <4 mm
<i>Weight:</i>	1.2 kg
<i>Temperature range:</i>	-35° to +50°C
<i>Protection Class:</i>	IP68
<i>Water / Humidity: Insulation</i>	WatBar – Physical insulation between the “connection room” and the light
<i>Note:</i>	No glued parts, no PMMA, no acrylic glass parts

Optical characteristics: (visible)

<i>Technology:</i>	High Power LED
<i>Light source:</i>	Aerolighting HELI-8 LED engine
<i>Available color:</i>	Green/White/Yellow/Blue/Red/Infrared/Dual
<i>Intensity (White):</i>	FATO mode: 100cd @ 0° (ground level) <i>Max level setting: 100%</i> Flight path mode: 40cd @ 0° (ground level) <i>Max level setting: 36%</i> <i>Max level limitation can be configured directly on site (from DA line) or in factory upon demand</i>
<i>Horizontal output:</i>	360°
<i>Intensity level:</i>	100% - 30% - 10% with LBR II DA from 5% to 100% with DALI
<i>LEDs Lifespan:</i>	>80'000 hours

Optical characteristics: (InfraRed)

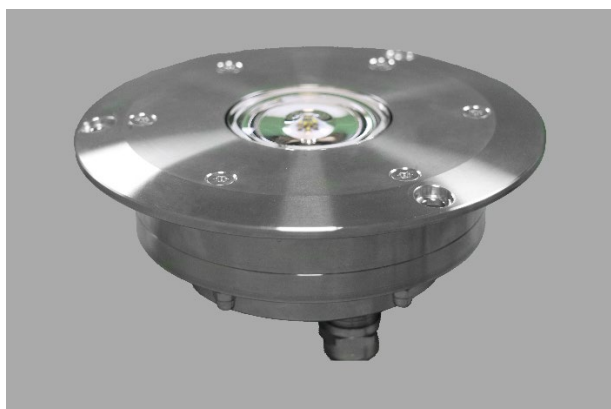
<i>Technology:</i>	High Power LED
<i>Light source:</i>	Aerolighting HELI-8 LED engine
<i>Wavelength:</i>	850nm (central) +/- 30nm
<i>Intensity (White):</i>	Up to 180mw/sr @ 0° elevation
<i>Horizontal output:</i>	360°
<i>Intensity level:</i>	100% - 30% - 10% with LBR II DA from 5% to 100% with DALI
<i>LEDs Lifespan:</i>	>80'000 hours

Electrical characteristics:

<i>Supply Voltage:</i>	48 Volts DC Automatic voltage drop (in line) compensation
<i>Power:</i>	Max 15 Watts (white: 15W / other color: 9W)
<i>Brightness regulation (visible):</i>	LBR II DA DALI (fully compatible with Digital Addressable Lighting Interface)
<i>Connection:</i>	+Vdc / -Vdc / DA / DA
<i>Type of cable:</i>	4x 1.5mm2 (if DALI or LBR II DA is not used, only 2 wires are connected) Note: this light can be used only by connecting 48V without any regulation (only ON/OFF)

Aeronautical standards

ICAO Annex 14 Vol II 5 th edition July 2020	TLOF perimeter lights Final approach and take off area lights (FATO) Aiming point lights Flight path and guidance lighting system
ICAO Annex 14 Vol I 9 th edition July 2022	Taxiway edge light
EASA CS-HPT-DSN Issue 1 2019	TLOF perimeter lights Final approach and take off area lights (FATO) Aiming point lights Flight path and guidance lighting system
CASA CAAP 92-2 (2) February 2014	Final approach and take off area lights (FATO) Flight path and guidance lighting system
FAA Engineering Brief 87 Jan 2012	Perimeter light L-860HS (L) – Semi-flush heliport fixture LED
FAA Engineering Brief 98 Dec 2018	850nm Infrared for NVG Exceed L-810(L) up to 120mW/sr from 0°(ground) to 90° // max 250mW/sr
FAA AC 150/5390-2C Apr 2012	TLOF perimeter lights Landing direction lights Flight path alignment lights
DGAC-STAC SPE/STAC/SE/E/VIS/6008	TLOF perimeter lights (certificate number: 2021-078/HEL) Final approach and take off area lights (FATO) (certificate number: 2021-081/HEL) Flight path and guidance lighting system (certificate number: 2021-081/HEL)
DGAC-STAC Version 4	Mechanical resistance on glass (up to 10 tons)
UK CAA CAP 437 July 2021	Perimeter light (power limitation programed in factories)
DIN EN IEC 642471 :2019	Safety of lamp system (for Infrared part)
IEC 60598-1 :2020	Ingress protection class dust/liquids



STAINLESS STEEL VERSION (1.4404 OR 1.4435)

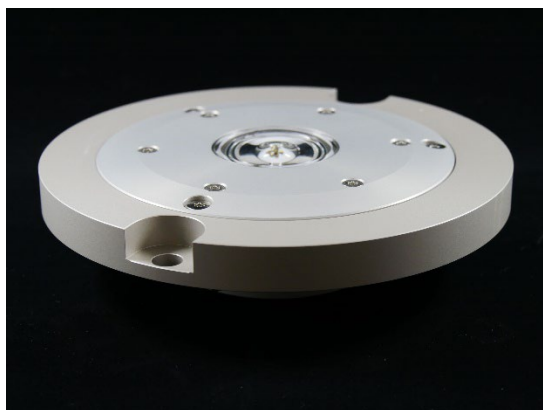
"A mirror-polished stainless steel finish is also available (yacht)."

ORDERING CODE

HeliX- G - AL

Type	Color	Material
HeliX	-G: Green -W: White -Y: Yellow -B: Blue -R: Red	-AL: Aluminum -IN: Stainless Steel Stainless steel 1.4404. or 1.4435

RELATED PRODUCTS



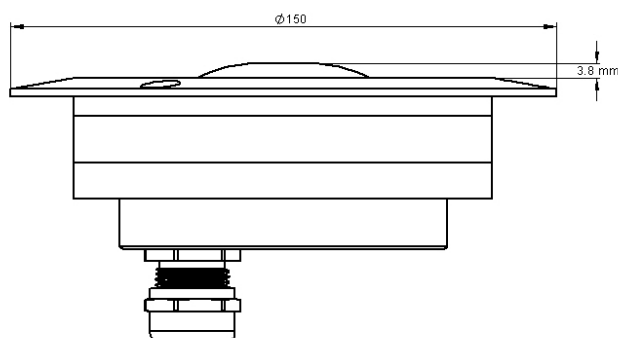
8" adapter ring (install HELI light into standard 8 inches base)



150mm shallow base (HXX Base)

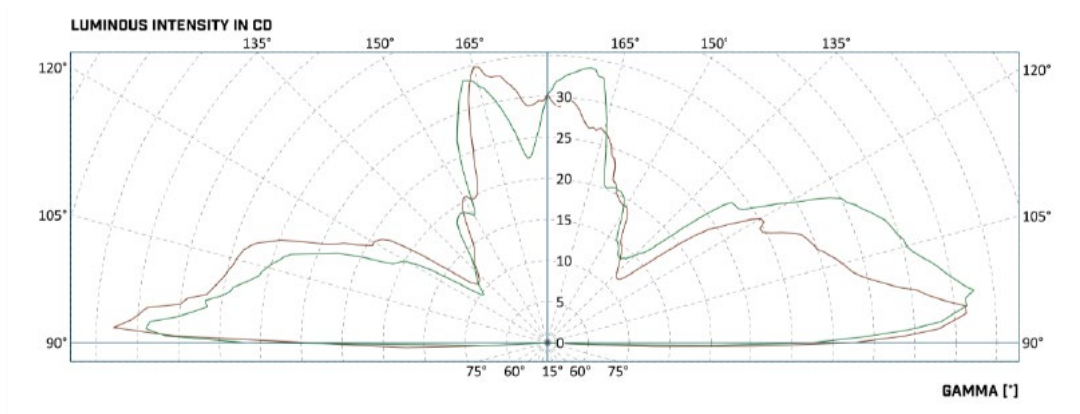
- External IP67 110-230 Volts driver
- External IP67 6.6A Driver
- LBR II DA brilliancy control central power supply

DRAWING

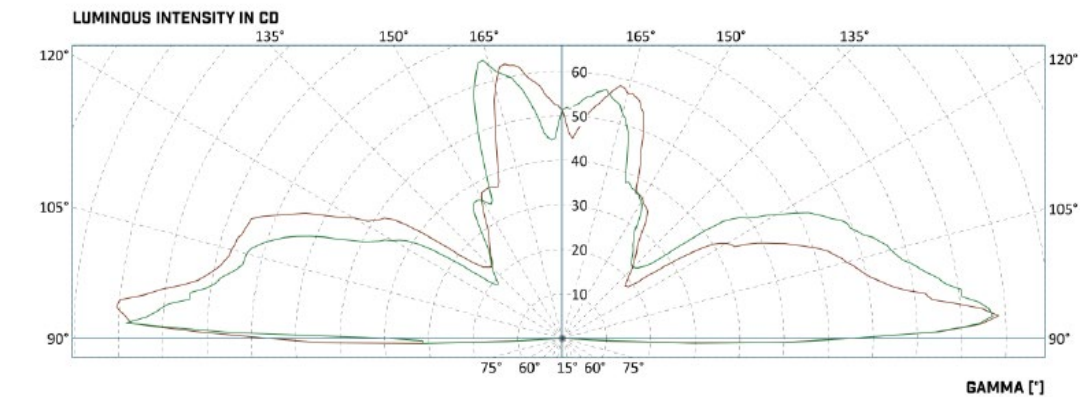


PHOTOMETRIC DATA

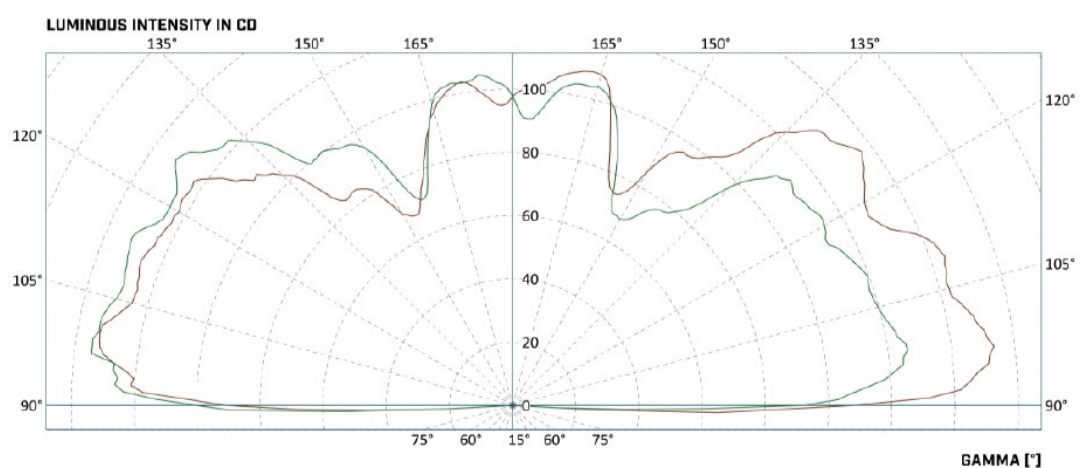
CAP437 (with intensity limitation programed in factory) - Green



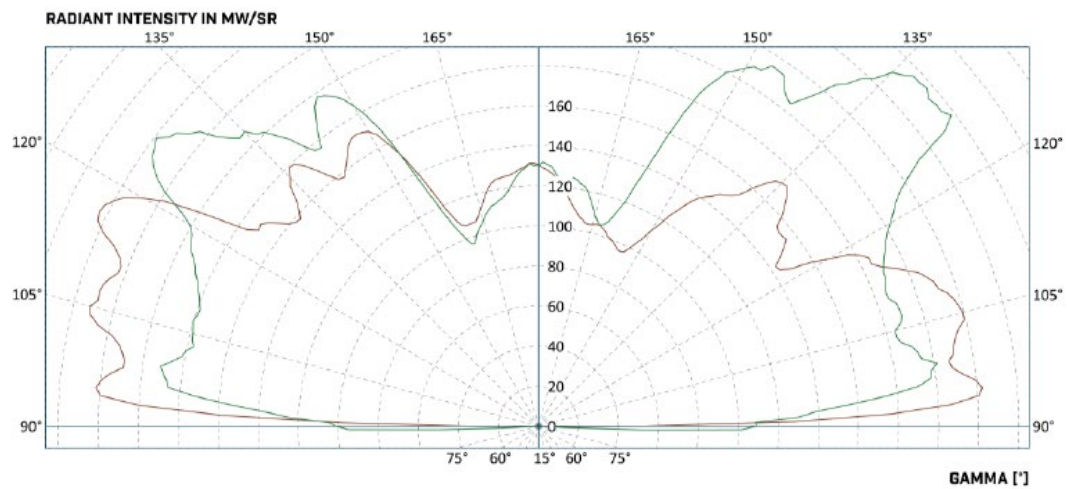
ICAO – Green



ICAO – White



INFRARED (integrated with all colors)



The descriptions, photometric measurements and features contained in this publication are given for information only and do not constitute an engagement for our society, which reserves the right to change them without prior notification.