

HXX Base

Mounting base for 150mm inset LED light

BASE



SUMMARY

Product summary:

This shallow base is designed to embed the 150mm inset LED light in concrete, resin or any other ground. Its use is optional for aluminum platforms or boat decks.

Once embedded in concrete, the base has enough space inside to make the electrical connections (in a junction box). The installation of the lamp is done simply by 3 screws. The HXX 150 base is available with bottom or side cable entry.



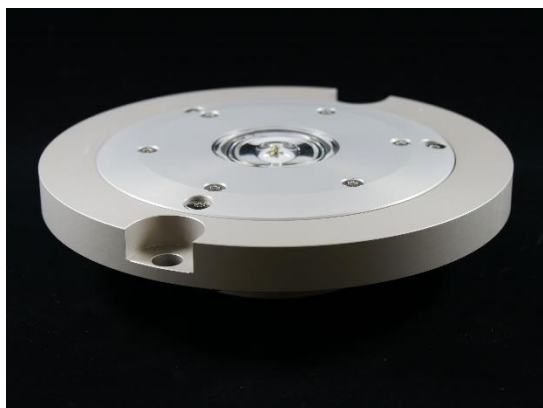
<i>Design:</i>	Shallow base for 150mm inset lights
<i>Material:</i>	Aluminum <i>Special version in stainless steel</i>
<i>Cable input:</i>	Bottom or side
<i>Height:</i>	122mm
<i>External diameter:</i>	160mm
<i>Material:</i>	Aluminium

ORDERING CODE

HXX BASE - AL - B

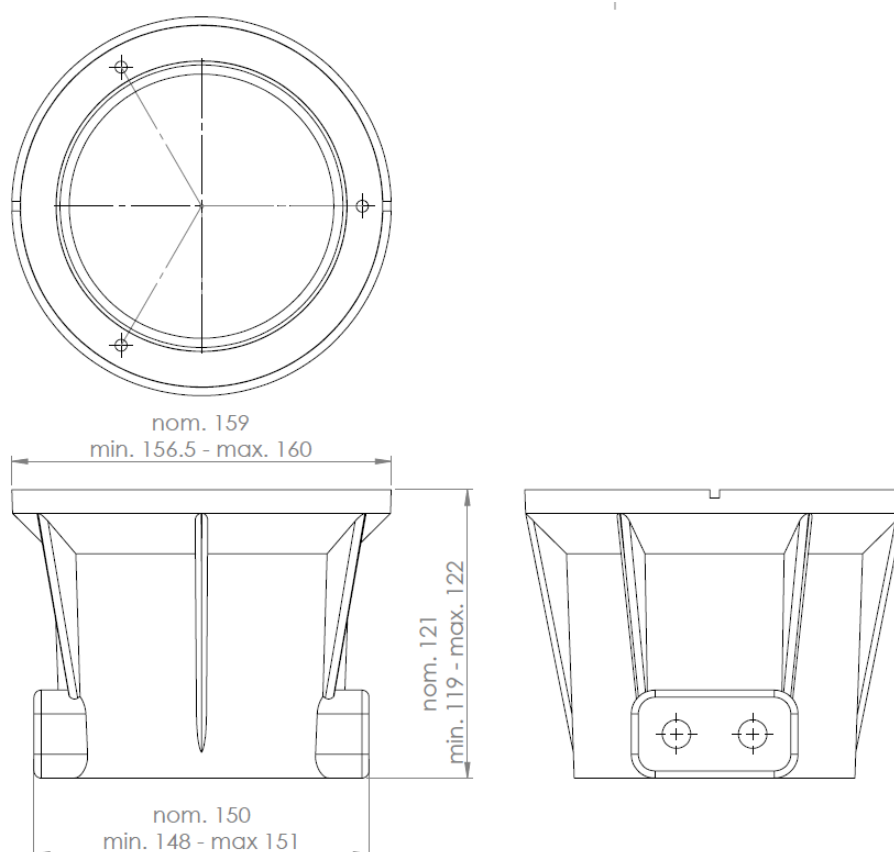
Type	Material	Cable entry
Helix	-AL: Aluminum -IN: Stainless Steel Stainless steel 1.4404, or 1.4435	-B : Bottom (50mm) -S : Side (M16x1.5)

RELATED PRODUCTS



8" adapter ring (install HELI light into standard 8 inches base)

DRAWING



The descriptions, photometric measurements and features contained in this publication are given for information only and do not constitute an engagement for our society, which reserves the right to change them without prior notification.