

# TDPM Segment light

*Inset LED light for Helipad*

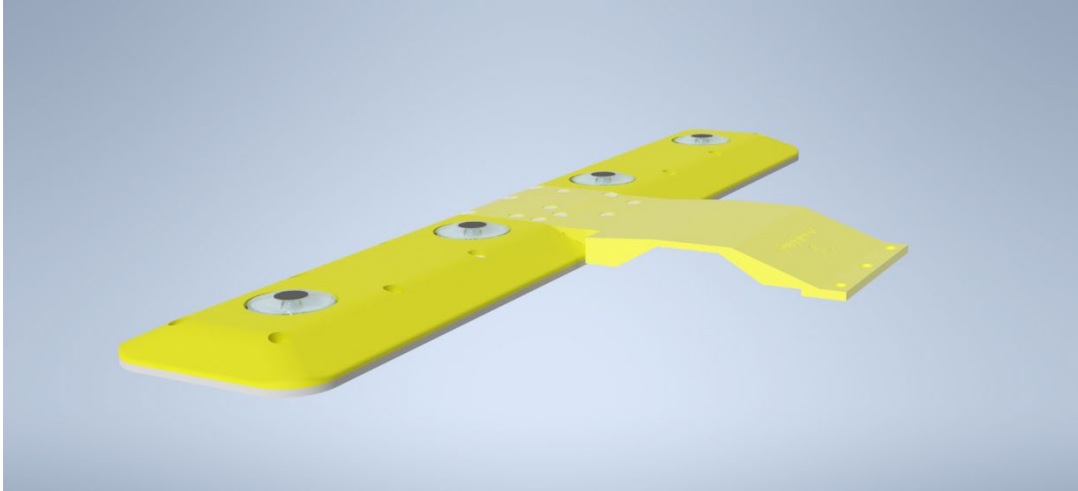
H lights

TD/PM

Circle lighting

ICAO

CAP

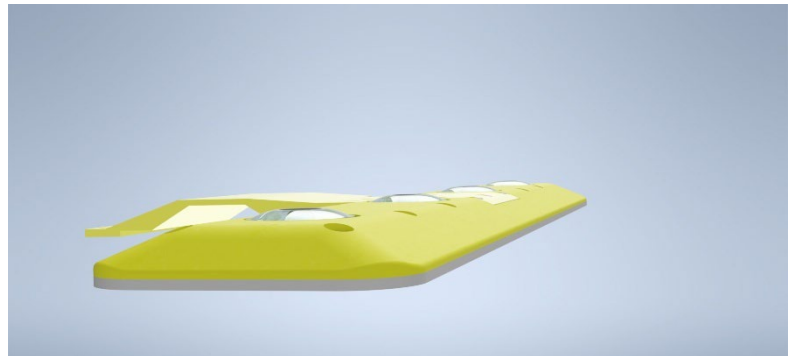


## SUMMARY

### Product summary:

TD/PM is a robust and very low projection LED light for Helipad. Designed in accordance with CAP437 and ICAO standard, this light is design to last. This product is designed for very high solicitation. With an increased static and dynamic load capacity, our product reduces the possibility of damage. The light is totally and perfectly waterproof, not for a limited period but for his whole lifetime! This light is the result of over 20 years of Aerolighting experience in the design and manufacture of aviation lighting. Its waterproofness, mechanical resistance, the care given to the photometry, the simplicity of the installation, the possibilities of digital control/monitoring make it the ideal product in most situations.

This lamp is made of aluminum (optional stainless steel), all screws and bolts are stainless steel. The LEDs, electronic components and all other components have been selected for their quality from leading manufacturers.



<b>Design:</b>	TD/PM Segment light
<b>Material:</b>	Aluminum or Stainless Steel
<b>IP Rating:</b>	IP 68
<b>NVG Enhanced:</b>	Integrated InfraRed
<b>Projection:</b>	Total: 19mm / glass: 2.8mm
<b>DALI</b>	Yes

<b>Power supply</b>	48 VDC
<b>Power:</b>	~5W
<b>Standards:</b>	ICAO, CAP437
<b>Brightness ctrl.:</b>	with LBR II DA or DALI
<b>LED Lifetime:</b>	> 100'000 hours
<b>iControl Ready:</b>	Yes

## TECHNICAL DESCRIPTION:

### Mechanical characteristics:

<b>Body material:</b>	Aluminum anodized or Stainless steel Borosilicate glass
<b>length:</b>	520mm
<b>Height above ground:</b>	19mm
<b>Weight:</b>	6.5 kg
<b>Temperature range:</b>	-35° to +50°C
<b>Protection Class:</b>	IP68
<b>Water / Humidity: Insulation</b>	WatBar – Physical insulation between the “connection room” and the light

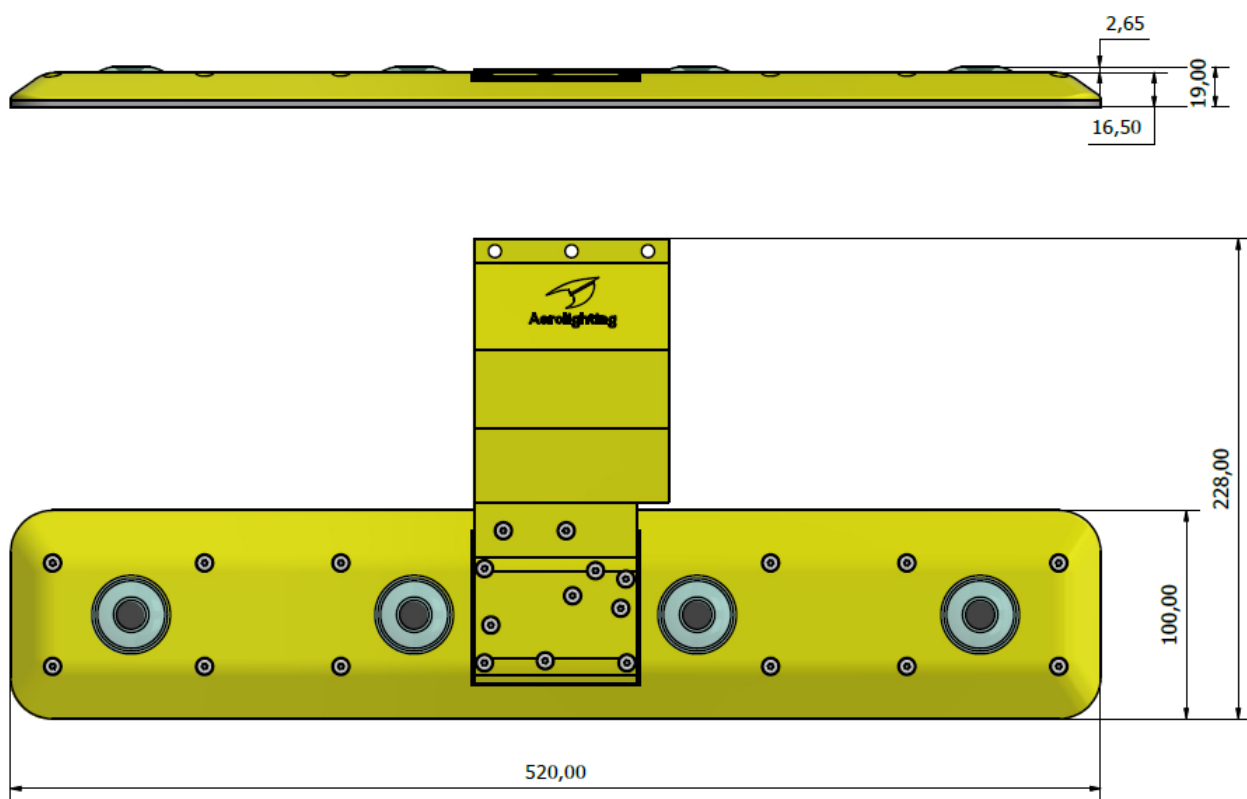
### Optical characteristics: (visible)

<b>Technology:</b>	High Power LED
<b>Light source:</b>	Aerolighting TDx light engine
<b>Available color:</b>	Green/Yellow
<b>Intensity:</b>	AS CAP 437 (150%)
<b>Intensity level:</b>	from 5% to 100% with DALI 100% - 30% - 10% with LBR II DA
<b>LEDs Lifespan:</b>	>100'000 hours

## Electrical characteristics:

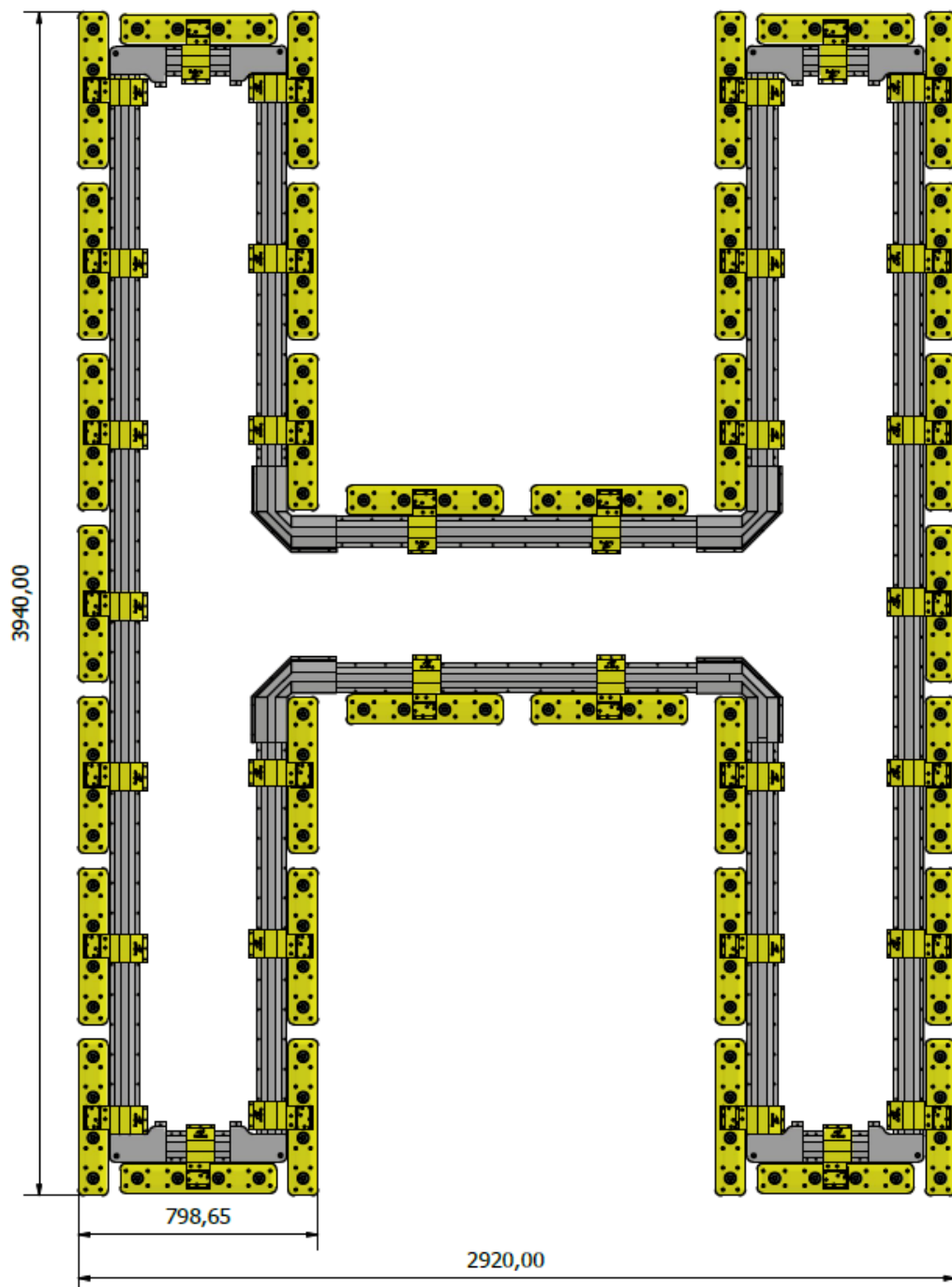
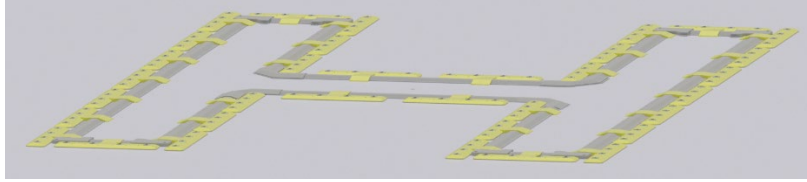
Supply Voltage:	48 Volts DC Automatic voltage drop (in line) compensation
Power:	Max 6 Watts
Brightness regulation (visible):	LBR II DA DALI (fully compatible with Digital Addressable Lighting Interface)
Connection:	+Vdc / -Vdc / DA / DA
Type of cable:	LKM-HF 4G1 0,6/1 kV Offshore-compliant cable specification, delivered with fully assembled and vulcanized connector. 4x 1mm <sup>2</sup>

## DRAWING



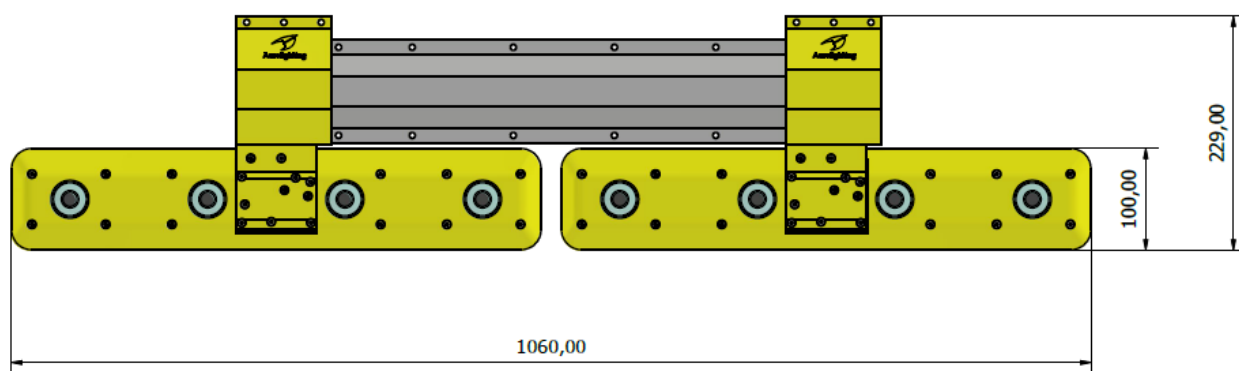
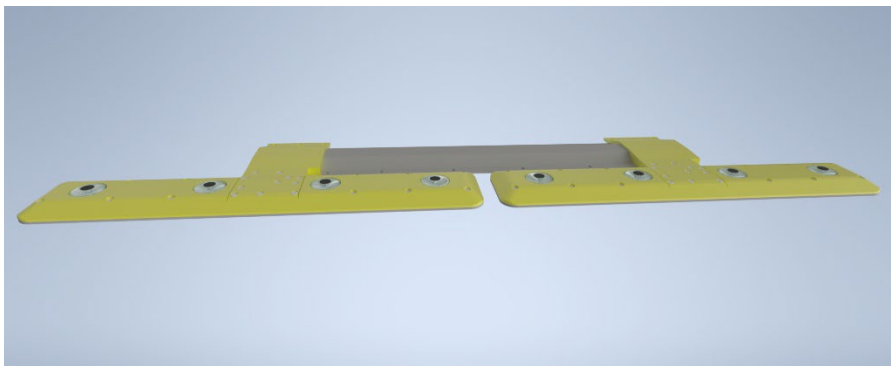
## H typical configuration

- 4x3 meters: 34 segments



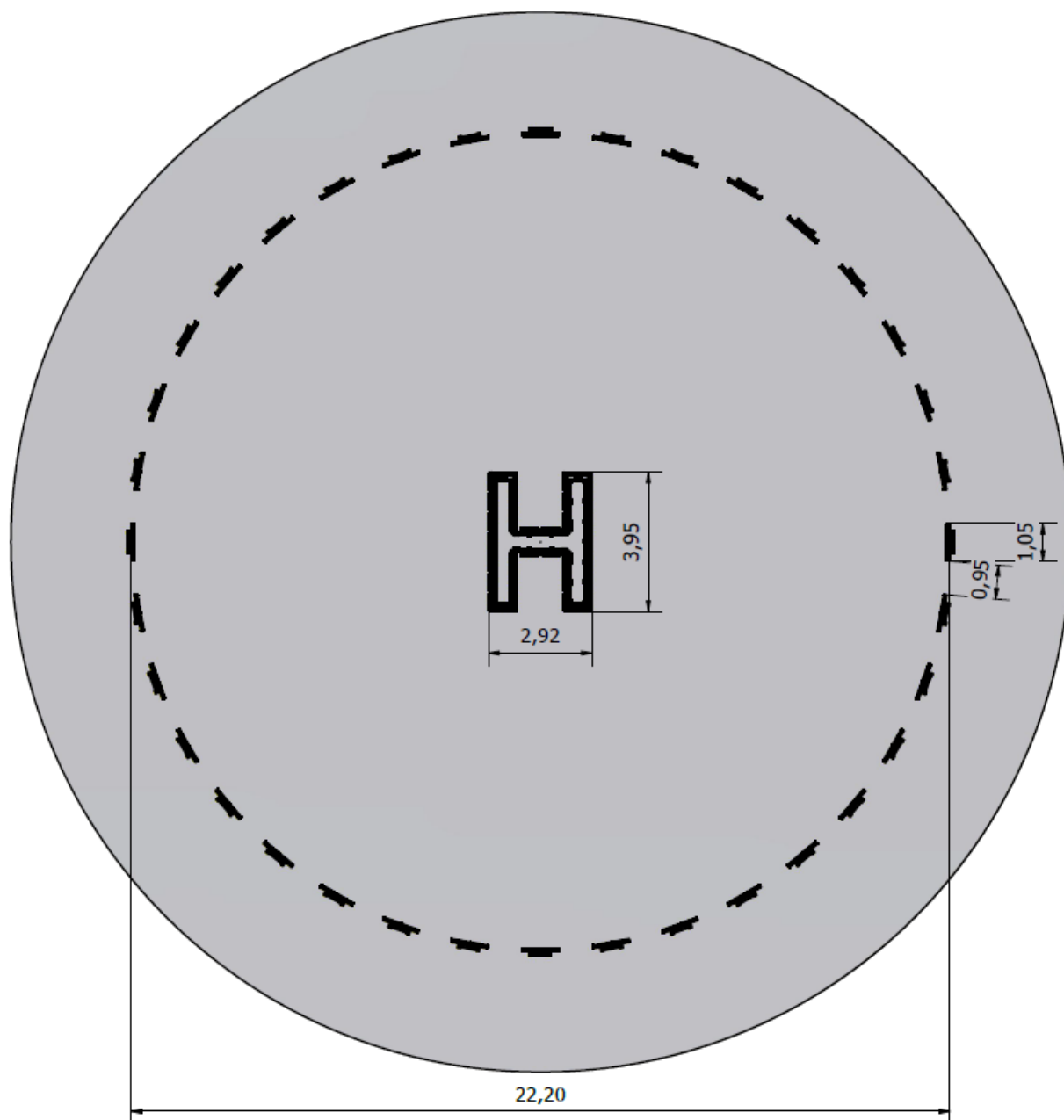
### Circle double segment typical configuration

- 2 segments 1 meters



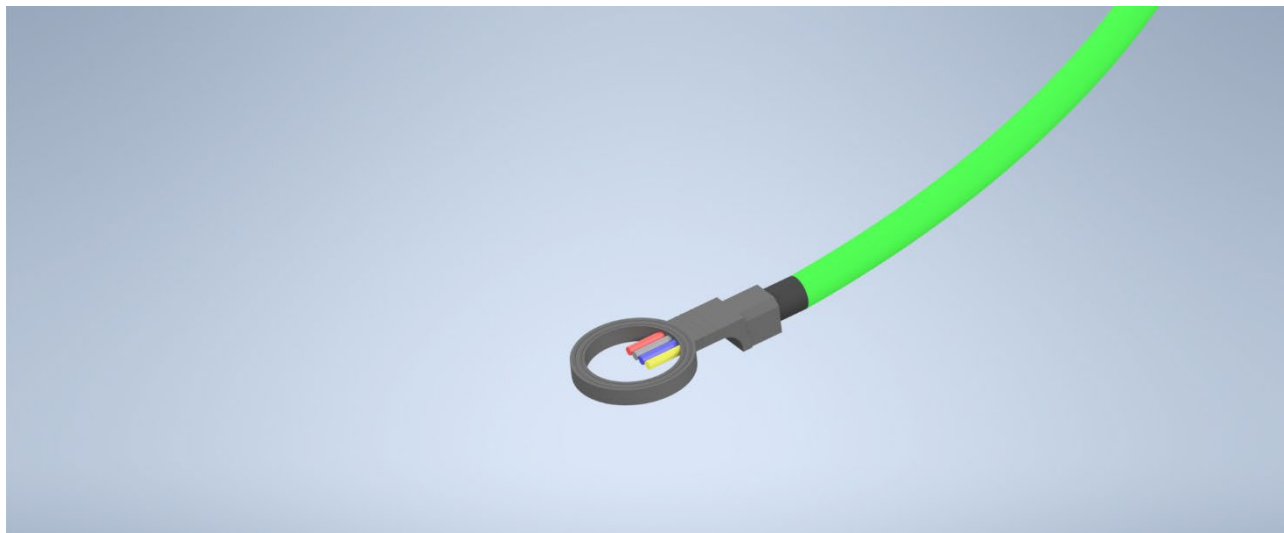
**Circle and H typical configuration [22.2 meters]**

- 36 double segment [72] circle – 34 segments H
- 106 segments

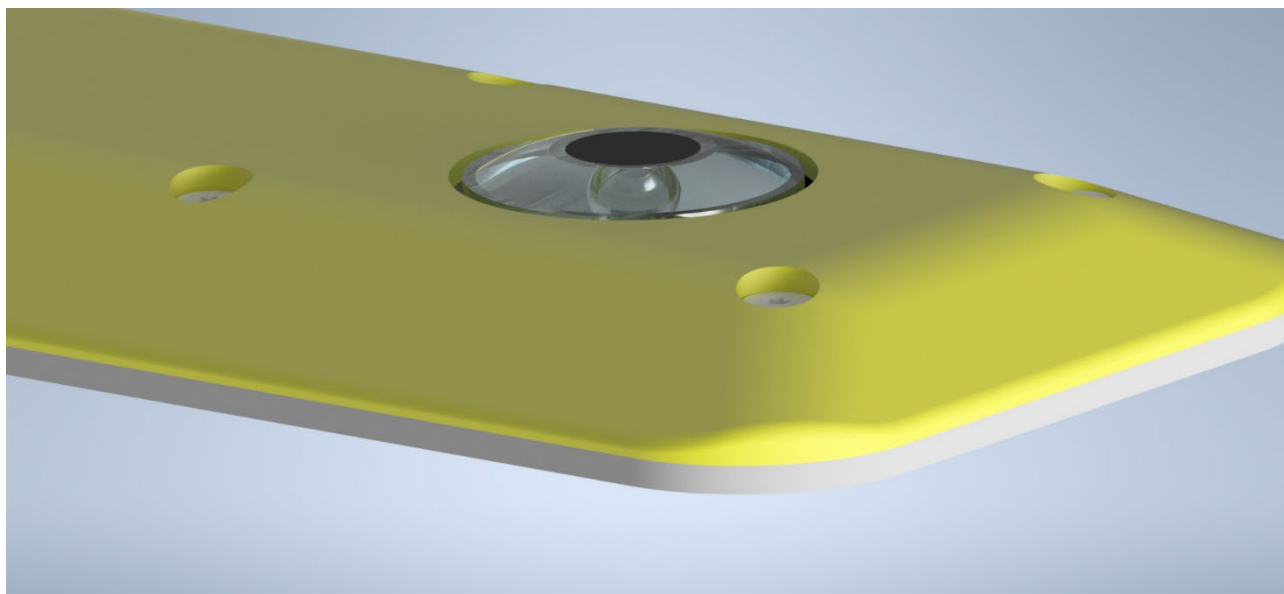
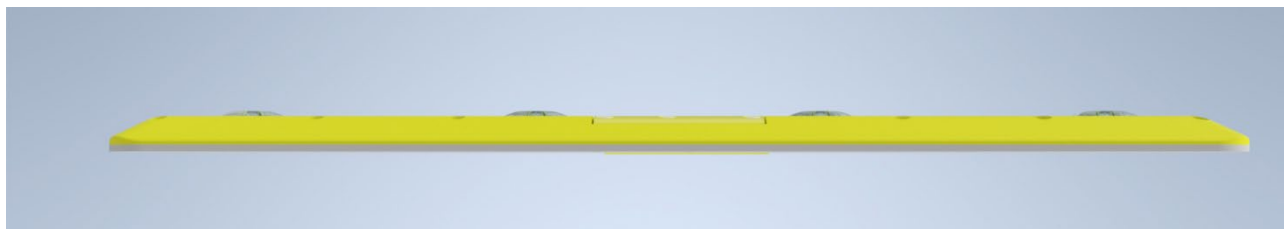


## Connection details

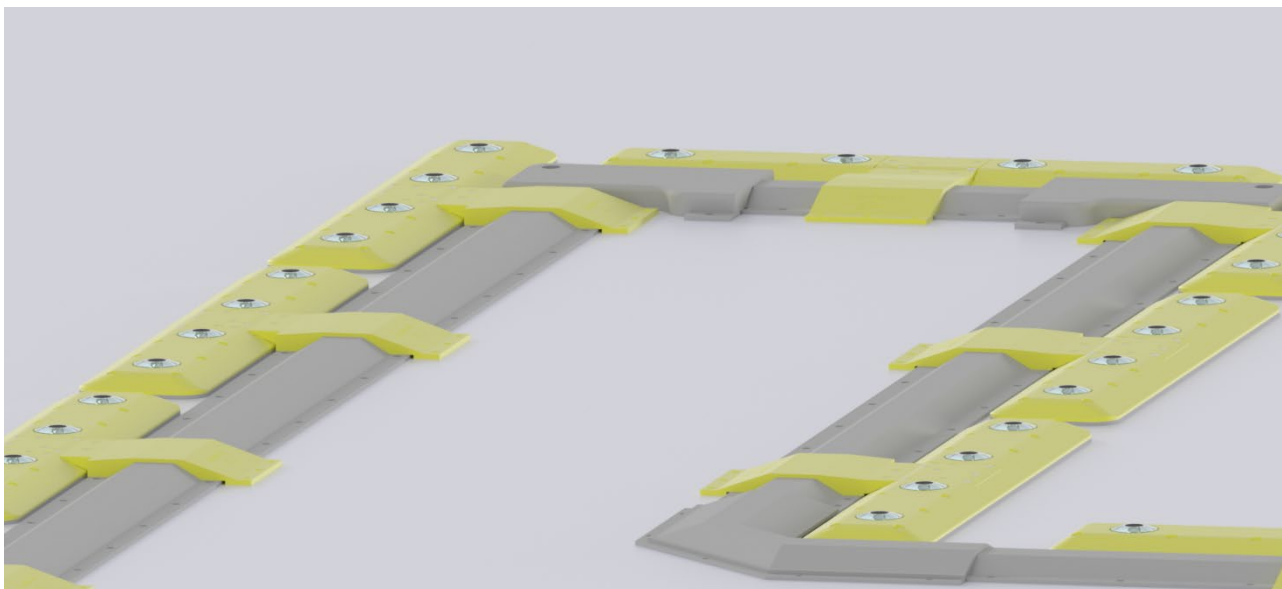
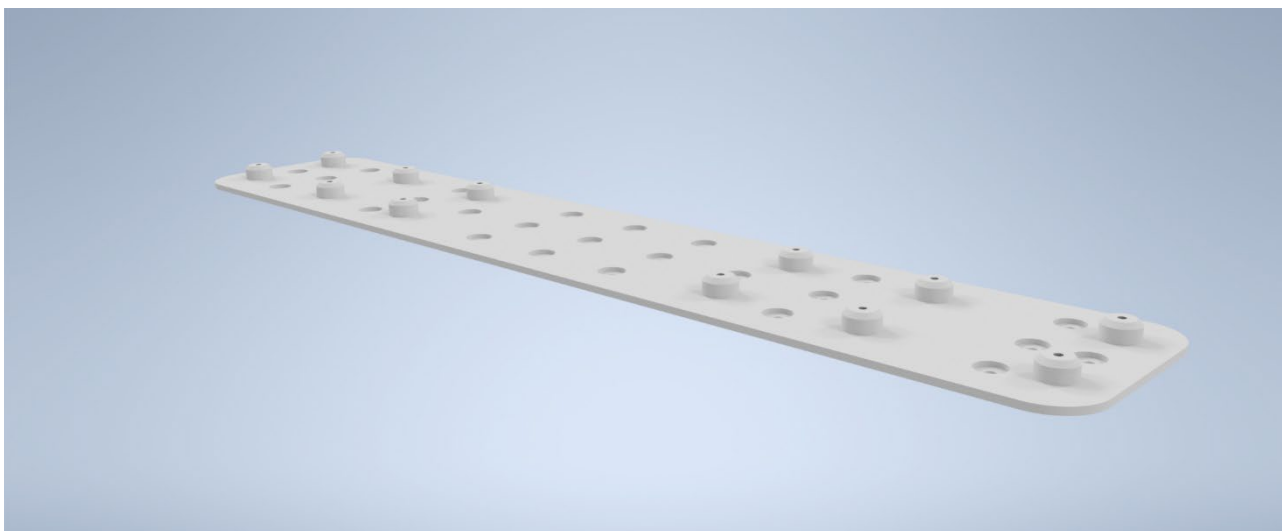
*Fully vulcanized and molded connector assembly with offshore-specification-compliant cable*



## Glass produsion detail (2.6mm) with bumper



## Fixing plate detail



The descriptions, photometric measurements and features contained in this publication are given for information only and do not constitute an engagement for our society, which reserves the right to change them without prior notification.